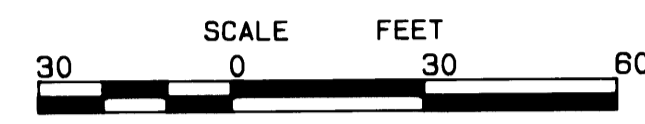
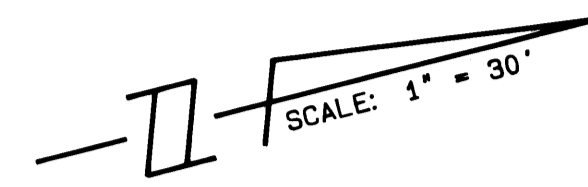


# PLAT NO. 25 SAILFISH POINT P.U.D.

LYING IN FRACTIONAL SECTIONS 8 AND 17,  
TOWNSHIP 38 SOUTH, RANGE 42 EAST,  
MARTIN COUNTY, FLORIDA



MAY, 1988

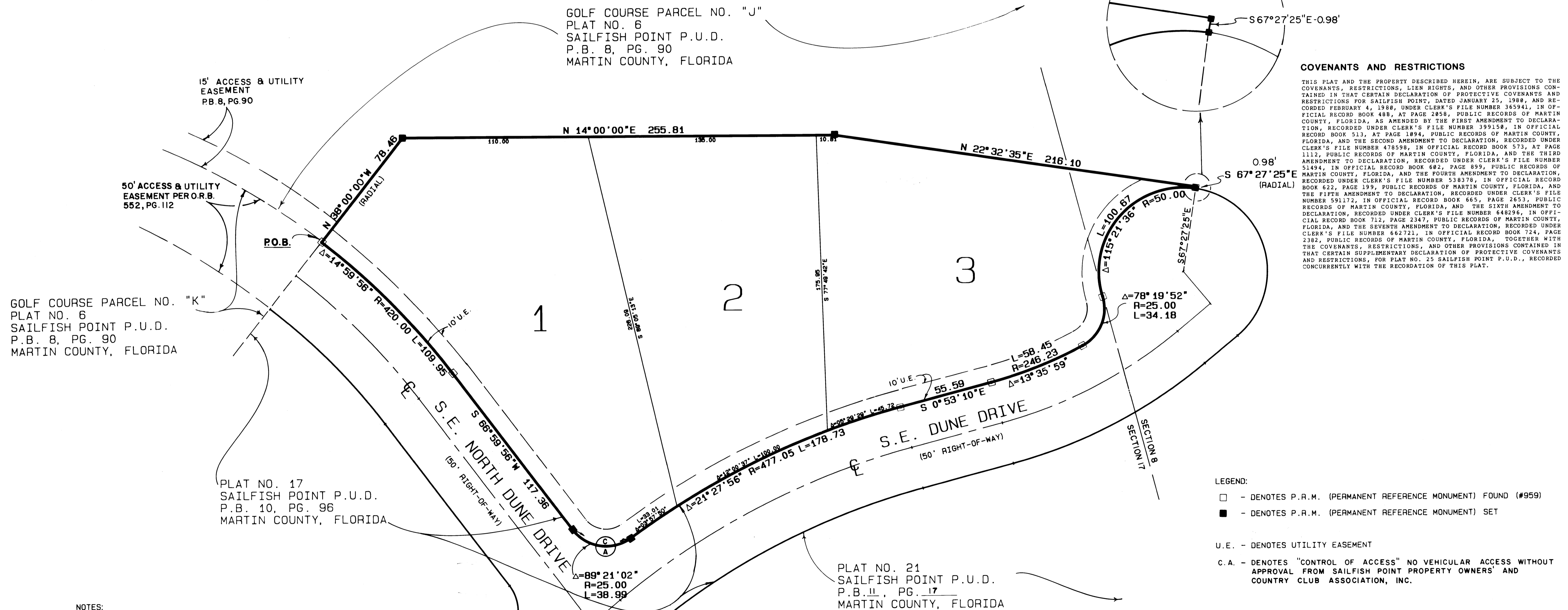
I, MARSHA STILLER, CLERK OF THE CIRCUIT COURT OF MARTIN COUNTY, FLORIDA, HEREBY CERTIFY THAT THIS PLAT WAS FILED FOR RECORD IN DEED BOOK 11, PAGE 39, MARTIN COUNTY, FLORIDA, PUBLIC RECORDS, THIS DAY OF 1988.

MARSHA STILLER, CLERK CIRCUIT COURT MARTIN COUNTY, FLORIDA.

BY: DEPUTY CLERK

FILE NO.

(CIRCUIT COURT SEAL)



### COVENANTS AND RESTRICTIONS

THIS PLAT AND THE PROPERTY DESCRIBED HEREIN, ARE SUBJECT TO THE COVENANTS, RESTRICTIONS, LIEN RIGHTS, AND OTHER PROVISIONS CONTAINED IN THAT CERTAIN DECLARATION OF PROTECTIVE COVENANTS AND RESTRICTIONS FOR SAILFISH POINT, DATED JANUARY 25, 1988, AND RECORDED FEBRUARY 4, 1988, UNDER CLERK'S FILE NUMBER 365941, IN OFFICIAL RECORD BOOK 488, AT PAGE 2858, PUBLIC RECORDS OF MARTIN COUNTY, FLORIDA, AS AMENDED BY THE FIRST AMENDMENT TO DECLARATION, RECORDED UNDER CLERK'S FILE NUMBER 399158, IN OFFICIAL RECORD BOOK 513, AT PAGE 1894, PUBLIC RECORDS OF MARTIN COUNTY, FLORIDA, AND THE SECOND AMENDMENT TO DECLARATION, RECORDED UNDER CLERK'S FILE NUMBER 478598, IN OFFICIAL RECORD BOOK 573, AT PAGE 1112, PUBLIC RECORDS OF MARTIN COUNTY, FLORIDA, AND THE THIRD AMENDMENT TO DECLARATION, RECORDED UNDER CLERK'S FILE NUMBER 51494, IN OFFICIAL RECORD BOOK 602, PAGE 899, PUBLIC RECORDS OF MARTIN COUNTY, FLORIDA, AND THE FOURTH AMENDMENT TO DECLARATION, RECORDED UNDER CLERK'S FILE NUMBER 53818, IN OFFICIAL RECORD BOOK 622, PAGE 199, PUBLIC RECORDS OF MARTIN COUNTY, FLORIDA, AND THE FIFTH AMENDMENT TO DECLARATION, RECORDED UNDER CLERK'S FILE NUMBER 591172, IN OFFICIAL RECORD BOOK 645, PAGE 2453, PUBLIC RECORDS OF MARTIN COUNTY, FLORIDA, AND THE SIXTH AMENDMENT TO DECLARATION, RECORDED UNDER CLERK'S FILE NUMBER 648296, IN OFFICIAL RECORD BOOK 712, PAGE 2347, PUBLIC RECORDS OF MARTIN COUNTY, FLORIDA, AND THE SEVENTH AMENDMENT TO DECLARATION, RECORDED UNDER CLERK'S FILE NUMBER 662721, IN OFFICIAL RECORD BOOK 724, PAGE 2382, PUBLIC RECORDS OF MARTIN COUNTY, FLORIDA, TOGETHER WITH THE COVENANTS, RESTRICTIONS, AND OTHER PROVISIONS CONTAINED IN THAT CERTAIN SUPPLEMENTARY DECLARATION OF PROTECTIVE COVENANTS AND RESTRICTIONS, FOR PLAT NO. 25 SAILFISH POINT P.U.D., RECORDED CONCURRENTLY WITH THE RECORDATION OF THIS PLAT.

### LEGEND:

- - DENOTES P.R.M. (PERMANENT REFERENCE MONUMENT) FOUND (#959)
- - DENOTES P.R.M. (PERMANENT REFERENCE MONUMENT) SET
- U.E. - DENOTES UTILITY EASEMENT
- C.A. - DENOTES "CONTROL OF ACCESS" NO VEHICULAR ACCESS WITHOUT APPROVAL FROM SAILFISH POINT PROPERTY OWNERS' AND COUNTRY CLUB ASSOCIATION, INC.

### NOTES:

- THERE SHALL BE NO BUILDINGS OR STRUCTURES PLACED ON UTILITY EASEMENTS.
- THERE SHALL BE NO BUILDINGS OR THE PLANTING OF TREES OR SHRUBS ON DRAINAGE EASEMENTS.
- WHEN DRAINAGE AND UTILITY EASEMENTS CROSS, DRAINAGE EASEMENTS SHALL TAKE PRECEDENCE.
- THERE SHALL BE NO LOT SPLITS EXCEPT TO CREATE LARGER LOTS.

LOT 1	0.6475 ACRES	28,284 SQ. FT.
LOT 2	0.5206 ACRES	22,677 SQ. FT.
LOT 3	0.5484 ACRES	23,888 SQ. FT.

BEARING BASE:  
THE WEST LINE OF SECTION 16, TOWNSHIP 38 SOUTH, RANGE 42 EAST, IS TAKEN TO BE S 00°44'00"W, AND ALL OTHER BEARINGS ARE RELATIVE THERETO.

LINDAHL BROWNING FERRARI & HELLSTROM, INC.  
CONSULTING ENGINEERS, PLANNERS & SURVEYORS

130 CENTRAL PARKWAY  
SUITE 400  
JUPITER, FLORIDA 33408

1905 SOUTH 25TH STREET  
SUITE 200  
FORT PIERCE, FLORIDA 33404

2 2